

J.W. HISTED DIAMONDS LTD.

Vancouver



March 2022

In Stock

In Vancouver

In your Store **OVERNIGHT!**

1-800-663-1458



Small Diamond Price Guide

Natural Diamonds In Canadian \$

ROUND
&
FANCY SHAPE
DIAMONDS

www.jwdiamonds.ca

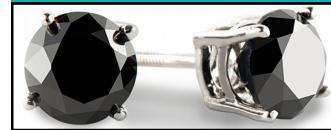
736 Granville St., #1400
Vancouver, B.C., V6Z 1G3

Phone: 604-681-8519

Phone: 800-663-1458

Fax: 604-681-2413

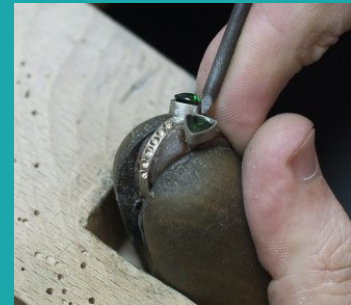
E-mail: info@jwdiamonds.ca



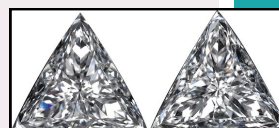
**We can supply White Diamonds (VS to I2)
Round or Fancy Shape, and Fancy Colour Diamonds
set in any style of Jewellery usually within 1-3 days.**

**We have many styles available.
Earrings up to 4ct tw and Tennis Bracelets up to 10ct tw**

**You can also send us your jewellery to
supply and set the diamonds**



**We are now stocking matched pairs
of Fancy Shape Diamonds**



Many more shapes available!

DIAMONDS

1/4 POINT TO 1/4 CARAT

FULL CUTS / SINGLE CUTS / FANCY SHAPE

PEAR / MARQUISE / OVAL / HEART / RADIANT / ASSCHER

TAPER BAGUETTE / STRAIGHT BAGUETTE / ROSE / CARRE / EMERALD
CUSHION.....

FANCY COLOUR TREATED ROUND AND PRINCESS

CERTIFIED DIAMONDS / www.jwdiamonds.ca

GIA, EGL, CGL, IGI, HRD, & GGA

COLOUR STONES

PRECIOUS / SEMI-PRECIOUS / SYNTHETIC / CZ

REPAIR QUALITY TO FINE QUALITY

BLUE SAPPHIRE / RUBY / EMERALD / TANZANITE

PINK TOURMALINE / BLUE ZIRCON / AMETHYST / GARNET

YELLOW SAPPHIRE / PERIDOT / CITRINE.....

FINDINGS

10K TO 19K / SILVER / PLATINUM

TENNIS BRACELETES / SETTINGS / PENDANTS / EARRINGS / CLASPS
.....5000+

METALS

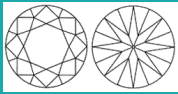
10K TO 24K / SILVER / PLATINUM

GRAIN / SOLDER / WIRE / PLATE / TUBE.....

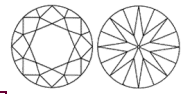
ONE CALL **1-800-663-1458**

In stock—In Vancouver—In your Store Overnight!

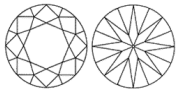
WE ARE A 100% CANADIAN COMPANY!



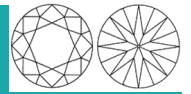
Round Full Cut Diamonds



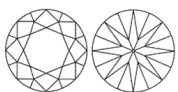
Order #	Sieve	MM Size CT.-Point Size +/-	A	B	C	D	E	P
DIA-0.80+_	+0000	0.80-0.84mm / 0.0025ct	\$1250	\$1100	\$1050	\$950	\$850	\$800
DIA-0.85+_		0.85-0.89 / 0.003	\$1250	\$1100	\$1050	\$950	\$850	\$800
DIA-0.90+_	+000	0.90-0.94 / 0.0035	\$1150	\$1050	\$950	\$850	\$750	\$700
DIA-0.95+_		0.95-0.99 / 0.0045	\$1210	\$1105	\$995	\$895	\$790	\$735
DIA-1.00+_	+00	1.00-1.04 / 0.005	\$1265	\$1155	\$1045	\$935	\$825	\$770
DIA-1.05+_		1.05-1.09 / 0.0055	\$1210	\$1105	\$995	\$895	\$790	\$735
DIA-1.10+_	+0	1.10-1.14 / 0.006	\$1150	\$1050	\$950	\$850	\$750	\$700
DIA-1.15+_	+1	1.15-1.19 / 0.0065	\$1150	\$1050	\$950	\$850	\$750	\$700
DIA-1.20+_	+1.5	1.20-1.24 / 0.0075	\$1265	\$1155	\$1045	\$935	\$825	\$770
DIA-1.25+_	+2	1.25-1.29 / 0.009	\$1050	\$945	\$895	\$790	\$695	\$650
DIA-1.30+_	+2.5	1.30-1.34 / 0.01	\$1100	\$990	\$935	\$825	\$725	\$685
DIA-1.35+_	+3	1.35-1.39 / 0.012	\$1050	\$945	\$895	\$790	\$695	\$650
DIA-1.40+_	+3.5	1.40-1.44 / 0.0135	\$1000	\$900	\$850	\$750	\$660	\$620
DIA-1.45+_	+4	1.45-1.49 / 0.0145	\$1050	\$945	\$895	\$790	\$695	\$650
DIA-1.50+_	+4.5	1.50-1.54 / 0.015	\$1100	\$990	\$935	\$825	\$725	\$685
DIA-1.55+_	+5	1.55-1.59 / 0.016	\$1050	\$945	\$895	\$790	\$695	\$650
DIA-1.60+_	+5.5	1.60-1.64 / 0.0175	\$900	\$850	\$770	\$700	\$620	\$580
DIA-1.65+_		1.65-1.69 / 0.019	\$945	\$895	\$810	\$735	\$650	\$610
DIA-1.70+_	+6	1.70-1.74 / 0.02	\$990	\$935	\$850	\$770	\$685	\$640
DIA-1.75+_		1.75-1.79 / 0.0215	\$945	\$895	\$810	\$735	\$650	\$610
DIA-1.80+_	+6.5	1.80-1.84 / 0.0235	\$950	\$880	\$800	\$740	\$650	\$620
DIA-1.85+_		1.85-1.89 / 0.025	\$950	\$880	\$800	\$740	\$650	\$620
DIA-1.90+_	+7	1.90-1.94 / 0.0265	\$995	\$925	\$840	\$775	\$680	\$650
DIA-1.95+_		1.95-1.99 / 0.029	\$1045	\$970	\$880	\$815	\$715	\$685
DIA-2.00+_	+7.5	2.00-2.04 / 0.03	\$1045	\$970	\$880	\$815	\$715	\$685
DIA-2.05+_		2.05-2.09 / 0.032	\$995	\$925	\$840	\$775	\$680	\$650
DIA-2.10+_	+8	2.10-2.14 / 0.035	\$990	\$920	\$850	\$780	\$680	\$640
DIA-2.15+_		2.15-2.19 / 0.037	\$990	\$920	\$850	\$780	\$680	\$640
DIA-2.20+_	+8.5	2.20-2.24 / 0.04	\$990	\$920	\$850	\$780	\$680	\$640
DIA-2.25+_		2.25-2.29 / 0.0425	\$990	\$920	\$850	\$780	\$680	\$640
DIA-2.30+_	+9	2.30-2.34 / 0.045	\$1100	\$1050	\$970	\$900	\$800	\$750
DIA-2.35+_		2.35-2.39 / 0.05	\$1195	\$1140	\$1045	\$960	\$855	\$795
DIA-2.40+_	+9.5	2.40-2.44 / 0.0525	\$1100	\$1050	\$970	\$900	\$800	\$750
DIA-2.45+_		2.45-2.49 / 0.055	\$1100	\$1050	\$970	\$900	\$800	\$750
DIA-2.50+_	+10	2.50-2.54 / 0.06	\$1155	\$1105	\$1020	\$945	\$840	\$785



Round Full Cut Diamonds



Order #	Sieve Size	MM Size CT.-Point Size +/-	A	B	C	D	E	P
DIA-2.55+_		2.55-2.59mm / 0.065ct	\$1100	\$1050	\$970	\$900	\$800	\$750
DIA-2.60+_	+10.5	2.60-2.64 / 0.07	\$1100	\$1050	\$970	\$900	\$800	\$750
DIA-2.65+_		2.65-2.69 / 0.075	\$1100	\$1050	\$970	\$900	\$800	\$750
DIA-2.70+_	+11	2.70-2.79 / 0.08	\$1140	\$1090	\$1000	\$950	\$850	\$780
DIA-2.80+_	+11.5	2.80-2.89 / 0.085	\$1190	\$1140	\$1050	\$980	\$880	\$830
DIA-2.90+_	+12	2.90-2.94 / 0.09	\$1575	\$1470	\$1365	\$1260	\$1080	\$990
DIA-2.95+_		2.95-2.99 / 0.095	\$1595	\$1485	\$1380	\$1285	\$1095	\$1015
DIA-3.00+_	+12.5	3.00-3.04 / 0.10	\$1650	\$1540	\$1430	\$1320	\$1135	\$1030
DIA-3.05+_		3.05-3.09 / 0.107	\$1595	\$1485	\$1380	\$1285	\$1095	\$1015
DIA-3.10+_	+13	3.10-3.14 / 0.11	\$1500	\$1400	\$1300	\$1200	\$1030	\$940
DIA-3.15+_		3.15-3.19 / 0.115	\$1500	\$1400	\$1300	\$1200	\$1030	\$940
DIA-3.20+_	+13.5	3.20-3.24 / 0.12	\$1500	\$1400	\$1300	\$1200	\$1030	\$940
DIA-3.25+_		3.25-3.29 / 0.13	\$1500	\$1400	\$1300	\$1200	\$1030	\$940
DIA-3.30+_	+14	3.30-3.39 / 0.14	\$1650	\$1500	\$1350	\$1250	\$1070	\$1000
DIA-3.40+_	+14.5	3.40-3.49 / 0.15	\$1815	\$1650	\$1485	\$1375	\$1180	\$1100
DIA-3.50+_	+15	3.50-3.59 / 0.165	\$1735	\$1575	\$1420	\$1315	\$1125	\$1050
DIA-.18+_		0.18-0.19ct	\$2050	\$1820	\$1550	\$1350	\$1100	\$1050
DIA-.20_		0.20ct	\$2255	\$2000	\$1705	\$1485	\$1210	\$1155
DIA-.21+_		0.21-0.22ct	\$2155	\$1915	\$1630	\$1420	\$1155	\$1105
DIA-.23+_		0.23-0.24ct	\$2400	\$2100	\$1800	\$1600	\$1250	\$1150
DIA-.25_		0.25ct	\$2640	\$2310	\$1980	\$1760	\$1375	\$1265
DIA-.26+_		0.26-0.28ct	\$2520	\$2205	\$1890	\$1680	\$1315	\$1210



Please contact us for Pricing on Larger Amounts



Assortment "A": Clarity VS to VVS, mostly VS and some VVS. Colour F-G-H, mostly F-G-H

Assortment "B": Clarity VS to SI, mostly VS and some SI1. Colour F-G-H, mostly F-G-H

Assortment "C": Clarity SI, mostly SI1 and SI2 some tough SI3. Colour F-G-H, mostly F-G-H

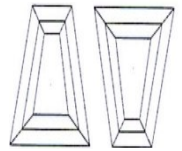
Assortment "D": Clarity SI2 to I1+, mostly SI2 and TOUGH I1+, VERY eye clean. Colour F-G-H.

Assortment "E": Clarity I1 TO I2+, mostly I1 and TOUGH I2+, 90% eye clean. Colour F-G-H.

Assortment "P": Clarity I, mostly I1 and I2 some I3, promo/repair. Colour G-H-I-J-K.



Straight & Tapered Baguette Diamonds



SIZE (Length)	BAG (Straight)	TBAG (Tapered)
1.3 to 1.9mm	\$925	\$995
2.0 to 2.4mm	\$995	\$995
2.5 to 2.9mm	\$1125	\$1100
3.0 to 3.4mm	\$1350	\$1325
3.5 to 3.9mm	\$1575	\$1525
Premium Calibrated Size	\$2300 4 x 2mm	\$2200 4 x 2 x 1.5mm
4.0 to 4.4mm	\$1995	\$2150
4.5 to 4.9mm	\$2200	\$2150
5.0 to 5.4mm	\$2995	\$2950
5.5mm & larger	Call / Limited availability	Call / Limited availability

There is not a "standard size" for Baguettes they can short and fat or long ad skinny. Order by mm L x W.

Straight or Tapered Baguettes are priced per carat based on their length not their weight in 5.4mm and smaller.

Assortment " BAG & TBAG ": Clarity VS , mostly VS and some SI1. Colour F-G-H, mostly F-G.

Selecting Service / Saving You Money

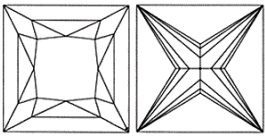
If you are needing Baguettes or any Fancy Shape Diamonds for a repair or a new piece of Jewellery you have designed and do not know the exact size (everyone's mm gauge is a little different) of Diamonds you will be needing.

You can give us the approximate size and quantity you are needing and we will send out to you a larger quantity to select from.

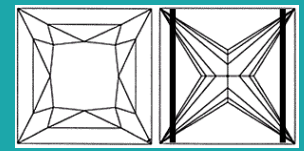
You work with our Diamonds to finish your piece and then send back to us any unused Diamonds (the non broken non chipped).

We will give a credit on your account for the returned NON-CHIPPED extra Diamonds.





Princess Cut Diamonds



SIZE	PRI Regular Cutting	CPRI Regular Cutting	GRPRI Grooved
1+ .01 to .03ct. / 1.0 to 1.7mm	\$895	\$750	\$850
1.8+ .04 to .06ct. / 1.8 to 2.1mm	\$995	\$795	\$895
Premium Calibrated Size	\$1020 _{2mm}	\$820 _{2mm}	\$920 _{2mm}
2.2+ .07 to .09ct. / 2.2 to 2.4mm	\$995	\$795	\$895
2.5+ .10 to .12ct. / 2.5 to 2.7mm	\$1125	\$935	\$1035
Premium Calibrated Size	\$1150 _{2.5mm}	\$960 _{2.5mm}	\$1060 _{2.5mm}
2.8+ .13 to .17ct. / 2.8 to 3.0mm	\$1320	\$995	\$1095
1/5ct .18 to .22ct	\$1450	\$1195	\$1295
1/4ct .23 to .29ct	\$1795	\$1455	\$1555

Assortment "PRI": Clarity VS to VVS, mostly VS and some VVS.

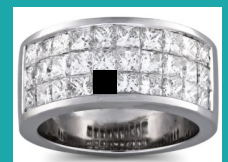
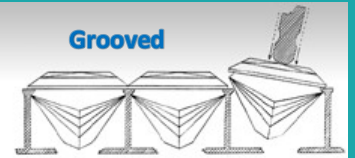
Colour F-G-H, mostly F-G.

Assortment "CPRI": Clarity SI, mostly SI2 and some SI1.

Colour G-H-I, mostly G-H.

Assortment "GRPRI": Clarity SI, mostly SI2 and SI1 some tough SI3.
Colour G-H-I, mostly G-H.
These are princess cuts with the grooves in two sides used for invisible set Jewellery.

Grooved



Assortments of larger amounts can be sent for you to select from to get your perfect size match, and then send back the unused (non-chipped) Diamonds



for full credit!

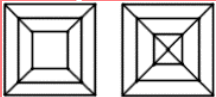
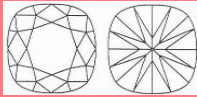
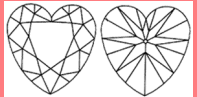
We now stock the Grooved Princess cuts

in Treated Blue Diamonds!

1.00 to 2.50mm **\$775 per ct**





Fancy Shape Diamonds

SIZE	SQ / Square Carre 	CU / Cushion 	HS / Heart 
.03 to .07ct.	\$1100	\$1300	\$1150
.08 to .13ct	\$1250	\$1375	\$1240
.14 to .17ct	\$1450	\$1790	\$1450
(1/5) .18 to .22ct	\$1500	\$1890	\$1595
(1/4) .23 to .29ct	\$1675	\$2125	\$1695

Assortment " SQ, CU, & HS ": Clarity VS , mostly VS and some SI1. Colour F-G-H.

Matching pairs of Fancy Shape Diamonds IN-STOCK!

SIZE	TRI / Trilliant 	SIZE	SC / Single cut Round 
2.5 to 2.9mm .05 to .09ct	\$1395	(-2) .0025 to .0075ct. 0.75 to 1.2mm	\$895
3.0 to 3.4mm .10 to .14ct	\$1675	(-6 1/2) .01 to .02ct. 1.25 to 1.75mm	\$925
3.5mm+ .15 to .17ct	\$1795	(+6 1/2) .025 to .07ct. 1.8 to 2.65mm	\$995
3.8mm+ .18 to .22ct	\$2095	(-2) .0025 to .0075ct. 0.75 to 1.2mm	\$295 Promo I2-I3 \$195 Promo I2-I3
4.2mm+ .23 to .29ct	\$2250		

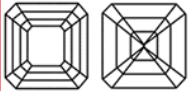
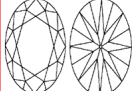
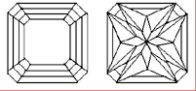
Assortment " TRI ": Curved Sides
Clarity SI , mostly SI1 and some SI2. Colour F-G-H.

Assortment " SC ":
Clarity SI , mostly SI2-3 and some SI1. Colour F-G-H.

SIZE	MQ / Marquise 	PS / Pear 	EME / Emerald 
.03 to .07ct.	\$1095	\$1095	\$1295
.08 to .13ct	\$1395	\$1455	\$1575
Premium Calibrated Size	\$1495 _{4x2mm}		
.14 to .17ct	\$1695	\$1695	\$1695
(1/5) .18 to .22ct	\$1850	\$1895	\$1900
(1/4) .23 to .29ct	\$2020	\$2060	\$2120

Assortment “ MQ, PS, & EME “: Clarity VS , mostly VS and some SI1. Colour F-G-H.

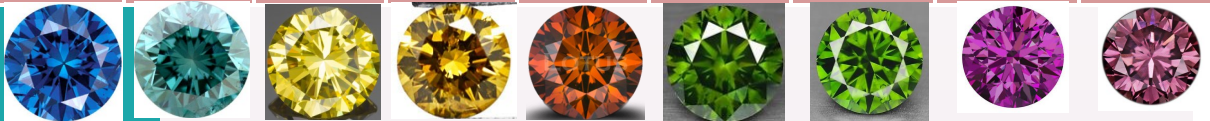
Matching pairs of Fancy Shape Diamonds IN-STOCK!

SIZE	AS / Asscher 	OV / Oval 	RAD / Radiant 
.03 to .07ct.	\$1480	\$1100	\$1295
.08 to .13ct	\$1595	\$1250	\$1550
.14 to .17ct	\$1750	\$1695	\$1725
(1/5) .18 to .22ct	\$1870	\$1850	\$1840
(1/4) .23 to .29ct	\$2100	\$1995	\$2100

Assortment “ AS, OV, & RAD “: Clarity VS , mostly VS and some SI1. Colour F-G-H.

“Treated” Fancy Colour Diamonds

Size	Blue Deep	Blue Teal	Yellow Intense	Yellow Golden	Orange Red	Green Deep	Green Slight Yellow	Purple Deep	Purple Slight Pink
(-2) .0025 to .0075ct. 0.75 to 1.19mm	\$795	\$700	\$875	\$795	\$730	\$880	\$995	\$1295	\$1500
(-6 1/2) .01 to .02ct. 1.25 to 1.74mm	\$795	\$650	\$825	\$725	\$790	\$790	\$995	\$1295	\$2100
(+6 1/2) .025 to .07ct. 1.8 to 2.64mm	\$775	\$650	\$825	\$725	\$700	\$790	\$995	\$1195	\$2100
(+11) .08 to .13ct. 2.8 to 3.24mm	\$900	\$800	\$995	\$875	\$850	\$850	\$1095	\$1700	Call Us
(+14) .14 to .17ct.	\$925	\$835	\$1050	\$925	\$910	\$900	\$1125	\$1795	Call Us
(1/5) .18 to .22ct.	\$1300	\$1125	\$1300	\$1150	\$1050	\$1050	\$1375	\$2500	Call Us
(1/4) .23 to .29ct.	\$1450	\$1300	\$1550	\$1425	\$1400	\$1350	\$1495	\$3000	Call Us
Larger sizes & shapes available	Call Us	Call Us	Call Us	Call Us	Call Us	Call Us	Call Us	Call Us	Call Us



Assortments of larger amounts can be sent for you to select from to get your perfect colour match, and then send back the unused (non-chipped) Diamonds



for full credit!

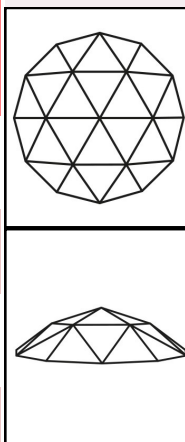
Treated Blue Diamonds

Princess cut

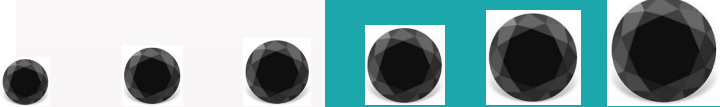
\$775 per ct (1.2-3.5mm)

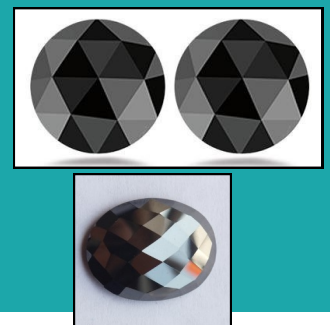


SIZE	White RD Rose Cuts VS/SI F/G/H
1.00—1.90mm	\$675
2.00-2.90mm	\$695
3.00-3.90mm	\$925
4.00-4.50mm	\$1175



Natural Diamonds “Treated” Black Diamonds

SIZE	Round Treated Black Diamonds	SIZE	Round Treated Black Diamonds
(-2) .0025-.0075ct 0.8-1.24mm	\$395	1/5ct & 1/4ct 3.65-4.15mm	\$225
(-6 1/2) .01-.02ct 1.25-1.74mm	\$395	1/3ct & 3/8ct 4.2-4.8mm	\$225
(+6 1/2) .025-.07ct 1.8-2.59mm	\$295	1/2ct, 3/4ct & .90ct 4.9-6.0mm	\$275
(+11) .08-.13ct 2.7-3.2mm	\$295	Over 1ct 0.96-5.00ct+	\$350 Website
(+14) .14-.17ct 3.3-3.6mm	\$275		
SIZE	Princess Treated Black Diamonds	SIZE	Asst. Fancy Shape Black Diamonds
1.3-1.7mm	\$350	Under 1ct 0.25-.95ct	\$275
1.8-2.4mm	\$350	Over 1ct 0.96-5.00ct+	\$350 Website
2.5-2.8mm	\$295		
1/5ct to 3/8ct .18-.49ct	\$225	<p><u>Fancy Shapes</u></p> <p>Oval, Emerald, Pear, Cushion, Radiant, Baguette, Heart, Marquise, and Asscher</p> <p><u>Rose Cuts</u></p> <p>Round, Oval, Pear, and Cushion</p>	
1/2ct, 3/4ct & 90's 0.50-.95ct	\$275		
Over 1ct .96—5.00ct+	\$350 Website		



Assortments of larger amounts can be sent for you to select from to get your perfect colour match, and then send back the unused Diamonds for full credit!

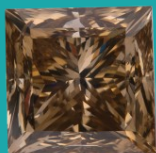
“Natural” Round Fancy Brown Colour Diamonds Champagne / Cognac / Chocolate

SIZE	C1-C3 Mixed (limited availability)	C4-C5 Mixed (limited availability)	C6-C8 Mixed (limited availability)
-2 (.005-.0075ct) 0.9-1.24mm	\$550	\$585	\$650
-6 1/2 (.01-.02ct) 1.25-1.74mm	\$500	\$525	\$650
+6 1/2 (.025-.07ct) 1.80-2.69mm	\$550	\$585	\$650
+11 (.08-.13ct) 2.75-3.19mm	\$625	\$675	\$790
+14 (.14-.17ct) 3.25-3.59mm	\$650	\$695	\$845
(1/5) .18 to .22ct	\$725	\$885	\$1050
(1/4) .23 to .29ct	\$825	\$985	\$1210



MANY! Larger Sizes in Rounds and Fancy Shapes Available

Online www.jwdiamonds.ca



“Natural” Fancy Yellow Colour Diamonds
 Fancy Light / Fancy Yellow / Golden Yellow

SIZE	NFLY <i>(limited availability)</i>	NFY <i>(limited availability)</i>	NGY <i>(limited availability)</i>
-2 (.005-.0075ct) 0.9-1.25mm	\$1260	\$1750	\$1050
-6 1/2 (.01-.02ct) 1.25-1.75mm	\$1260	\$1850	\$1050
+6 1/2 (.025-.07ct) 1.80-2.70mm	\$1680	\$2380	\$1150
+11 (.08-.13ct) 2.75-3.20mm	\$2100	\$3080	\$1400
+14 (.14-.17ct) 3.25-3.60mm	\$2300	Call	Call
(1/5) .18 to .22ct	\$2800	Call	Call
(1/4) .23 to .29ct	\$3500	Call	Call



“Natural” Fancy Pink Colour Diamonds
 Fancy Light / Fancy Pink / Brown Pink

SIZE	NFLP <i>(limited availability)</i>	NFP <i>(limited availability)</i>	NBP <i>(limited availability)</i>
-2 (.005-.0075ct) 0.9-1.25mm	\$1600	\$3500	\$1050
-6 1/2 (.01-.02ct) 1.25-1.75mm	\$2000	\$3500	\$1250
+6 1/2 (.025-.07ct)	\$2400	\$4800	\$1500

J.W. HISTED DIAMONDS LTD.

When placing a special order for Diamonds, please take advantage of this useful tool when calculating the sizes of the pieces you will need. Especially useful when doing custom work, the following is an approximation that will help you calibrate weight, size and shape of the Diamonds you need to complete your design.



STRAIGHT AND TAPERED BAGUETTES

For tapered stones, please subtract 20% from the weight on the chart below

SIZES IN mm	1.50 long	2.00	2.50	3.00	3.50	4.00	4.50	5.00
1.00 wide	.01 ct	.02	.025	.03	.04	.05	.07	.08
1.50	.02	.04	.05	.06	.07	.08	.10	.12
2.00	.04	.05	.08	.10	.11	.14	.16	.19
2.50	.05	.08	.10	.13	.15	.18	.22	.27
3.00	.08	.10	.13	.16	.21	.25	.30	.34
3.50	.07	.11	.15	.21	.25	.30	.41	.50

* Any size or shape is available through our *

* special order service *

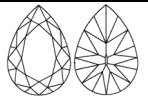
* Please phone toll free for prices quotes / price list *

* Next day delivery for in stock Diamonds *

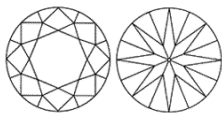
J.W. FINDINGS & STONES LTD. / J.W. HISTED DIAMONDS LTD.

VANCOUVER, B.C., CANADA 1-800-663-1458 / FAX 604-681-2413

PEAR SHAPES



LENGTH X WIDTH IN mm	WEIGHT
3.4-3.9 X 2.4-2.8	0.08-0.12 ct.
4.0-4.4 X 2.9-3.2	0.13-0.17
4.5-4.8 X 3.3-3.4	0.18-0.23
4.9-5.1 X 3.4-3.6	0.24-0.28
5.2-5.8 X 3.5-3.8	0.29-0.37
5.9-6.5 X 3.9-4.3	0.38-0.45
6.6-7.0 X 4.4-4.6	0.46-0.55



ROUNDS



WEIGHT	DIAMETER
0.005 ct.	0.95-1.10 mm
0.0075	1.20-1.25
0.01	1.275-1.40
0.015	1.45-1.55
0.02	1.65-1.75
0.025	1.80-1.85
0.03	1.90-2.00
0.04	2.00-2.15
0.05	2.30-2.4
0.06	2.40-2.55
0.07	2.60-2.7
0.08	2.70-2.80

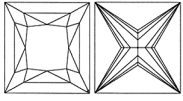
WEIGHT	DIAMETER
0.09 ct.	2.80-2.90 mm
0.10	2.90-3.00
0.11	3.00-3.10
0.12	3.10-3.20
0.14	3.25-3.30
0.15	3.35-3.45
0.16	3.45-3.50
0.17	3.50-3.60
0.20	3.65-3.75
0.22	3.80-3.85
0.23	3.85-3.90
0.25	3.95-4.05

WEIGHT	DIAMETER
0.30 ct.	4.25-4.30 mm
0.33	4.35-4.40
0.35	4.40-4.50
0.40	4.60-4.70
0.45	4.75-4.95
0.50	5.00-5.10
0.55	5.10-5.25
0.65	5.40-5.60
0.70	5.65-5.75
0.75	5.80-5.90
0.78	5.90-6.00
0.85	6.00-6.10

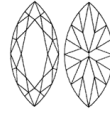
WEIGHT	DIAMETER
0.90 ct.	6.15-6.25 mm
1.00	6.30-6.50
1.05	6.40-6.60
1.15	6.60-6.70
1.25	6.85-7.10
1.35	7.20-7.30
1.50	7.30-7.50
1.60	7.50-7.75
1.75	7.80-7.90
1.85	7.90-8.00
2.00	8.00-8.20

J.W. HISTED DIAMONDS LTD.

When placing a special order for Diamonds, please take advantage of this useful tool when calculating the sizes of the pieces you will need. Especially useful when doing custom work, the following is an approximation that will help you calibrate weight, size and shape of the Diamonds you need to complete your design.



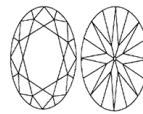
PRINCESS CUTS



MARQUISE SHAPE

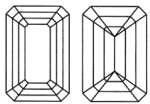
SIZES in mm	WEIGHT	SIZES in mm	WEIGHT
1.5	0.02-0.03 ct.	3.2	0.20 ct.
1.6	0.03-0.35	3.3	0.22
1.7	0.35-0.04	3.4	0.24
1.8	0.04	3.5	0.25
1.9	0.045	3.6	0.26
2.0	0.05	3.7	0.27-0.30
2.1	0.06	3.8	0.30-0.35
2.2	0.07	3.9	0.35-0.38
2.3	0.08	4.0	0.36-0.40
2.4	0.09	4.1	0.41
2.5	0.10	4.2	0.42
2.6	0.11	4.3	0.44-0.46
2.7	0.12	4.4	0.45-0.50
2.8	0.13	4.5	0.50-0.55
2.9	0.14	4.8	0.60-0.65
3.0	0.16	5.0	0.70-0.80
3.1	0.18		

LENGTH X WIDTH IN mm	WEIGHT
3.5-3.8 x 1.6-1.9	0.06-0.07 ct.
3.9-4.2 x 2.0-2.2	0.08-0.12
4.3-4.8 x 2.3-2.4	0.13-0.15
4.9-5.4 x 2.5-2.8	0.16-0.18
5.5-6.0 x 2.9-3.2	0.19-0.22
6.1-5.6 x 3.2-3.4	0.23-0.27
6.5-7.0 x 3.5-3.7	0.28-0.36
7.1-7.5 x 3.8-4.0	0.37-0.44
7.5-8.0 x 4.1-4.3	0.45-0.55



OVAL SHAPES

LENGTH X WIDTH IN mm	WEIGHT
3.3-3.7 X 2.4-2.7	0.09-0.12 ct.
3.7-4.1 X 2.8-3.2	0.14-0.17
4.2-4.6 X 3.3-3.7	0.18-0.22
4.7-4.8 X 3.7-3.9	0.23-0.28
4.9-5.2 X 4.0-4.2	0.29-0.35
5.3-5.7 X 4.2-4.4	0.35-0.45
5.8-6.2 X 4.4-4.6	0.46-0.55



EMERALD CUTS

LENGTH X WIDTH IN mm	WEIGHT
3.0-3.3 x 2.0-2.3	0.10-0.12 ct.
3.4-3.7 x 2.4-2.7	0.14-0.17
3.8-4.0 x 2.7-2.9	0.18-0.22
4.0-4.3 x 2.9-3.2	0.23-0.27
4.4-4.8 x 3.3-3.6	0.28-0.38
4.9-5.3 x 3.6-3.9	0.39-0.45
5.0-5.5 x 4.0-4.5	0.50-0.60
6.0 x 4.0	0.65

J.W. FINDINGS & STONES LTD. / J.W. HISTED DIAMONDS LTD.

VANCOUVER, B.C., CANADA 1-800-663-1458 / FAX 604-681-2413





#TB789

TW	QTY (ct)	C	D	E
1.00	55X.018	\$2475	\$2320	\$1575
1.50	50X.03	\$2960	\$2810	\$2550
2.00	50X.04	\$3570	\$3375	\$3050
2.50	43X.058	\$4195	\$3870	\$3450
3.00	42X.071	\$4860	\$4475	\$3975
4.00	40X.10	\$6950	\$6375	\$5150
5.00	36X.14	\$9860	\$8995	\$7120
6.00	32X.19	\$12720	\$11495	\$8450

Assortment " C ": Clarity SI, mostly SI1 and SI2 some tough SI3. Colour F-G-H, mostly F-G-H

Assortment " D ": Clarity SI2 to I1+, mostly SI2 and TOUGH I1+, VERY eye clean. Colour F-G-H.

Assortment " E ": Clarity I1 TO I2+, mostly I1 and TOUGH I2+, 90% eye clean. Colour F-G-H.

Prices are in wholesale cost in Canadian Dollars + GST/HST, in 14k.



#TB1369

TW	QTY (ct)	C	D	E
1.00	21X.047	\$2210	\$2080	\$1920
1.25	21X.06	\$2520	\$2375	\$2150
1.50	20X.075	\$3190	\$2990	\$2485
2.00	19X.105	\$3900	\$3600	\$2875



#TB1330

TW	QTY (ct)	C	D	E
3.00	67X.045	\$4150	\$3845	\$3340
4.00	65X.062	\$5750	\$3950	\$4495
5.00	57X.088	\$7940	\$7350	\$5625
6.00	51X.118	\$8675	\$7940	\$6040
7.00	47X.149	\$12750	\$11575	\$8850



#TB850

TW	QTY (ct)	C	D	E
2.00	72X.028	\$3740	\$3550	\$3240
3.00	64X.047	\$4995	\$4630	\$4160
4.00	61X.066	\$6040	\$5530	\$4420
5.00	57X.088	\$8485	\$7735	\$6135



#TB849

TW	QTY (ct)	C	D	E
1.00	55X.018	\$2490	\$2395	\$2250
2.00	50X.04	\$3190	\$2995	\$2690
3.00	47X.064	\$4780	\$4340	\$3750

Prices are in wholesale cost in Canadian Dollars + GST/HST, in 14k.



#TB687

TW	QTY (ct)	C	D	E
0.50	12X.04	\$1850	\$1785	\$1725
0.85	12X.07	\$2325	\$2195	\$2040
1.00	10X.10	\$2875	\$2850	\$2450
1.50	10X.15	\$4150	\$3750	\$3250



#TB523

TW	QTY (ct)	C	D	E
2.50	74X.034	\$4540	\$4285	\$3875
3.50	64X.055	\$5875	\$5565	\$4975
5.60	56X.10	\$9450	\$8690	\$6875
7.00	51X.137	\$11775	\$10740	\$8365



#TB522

TW	QTY (ct)	C	D	E
1.50	74X.02	\$2785	\$2725	\$2395
2.00	62X.032	\$3275	\$2995	\$2650
2.50	56X.045	\$3750	\$3390	\$3080
3.00	55X.055	\$4650	\$4290	\$3750
4.00	52X.077	\$5840	\$5250	\$4575
5.00	50X.10	\$8150	\$7400	\$5750
6.00	46X.13	\$9195	\$8375	\$6275
7.00	44X.159	\$12,795	\$11,250	\$8750
8.00	42X.19	\$16,425	\$15,595	\$10,500
9.20	40X.23	\$21,250	\$18,200	\$13,800
10.25	38X.27	\$23,200	\$19,995	\$15,600

Prices are in wholesale cost in Canadian Dollars + GST/HST, in 14k.



#TB1382

TW	QTY (ct)	C	D	E
2.00	78X.025	\$3095	\$2950	\$2575
3.00	71X.042	\$4040	\$3675	\$3150
4.00	65X.062	\$5395	\$4960	\$4195
5.00	58X.086	\$7815	\$7020	\$5500
7.00	52X.135	\$10,550	\$9450	\$7290
8.00	48X.166	\$15,575	\$13,495	\$9700
9.00	43X.21	\$19,350	\$16,995	\$11,150
10.00	41X.244	\$22,900	\$20,350	\$15,100

ALL JEWELLERY ALSO AVAILABLE

SET WITH COLOUR STONES

Assortment " C ": Clarity SI, mostly SI1 and SI2 some tough SI3. Colour F-G-H, mostly F-G-H

Assortment " D ": Clarity SI2 to I1+, mostly SI2 and TOUGH I1+, VERY eye clean. Colour F-G-H.

Assortment " E ": Clarity I1 TO I2+, mostly I1 and TOUGH I2+, 90% eye clean. Colour F-G-H.



#BB523

QTY-TW	C	D	E
24=1.00	\$2680	\$2650	\$2500
20=2.00	\$4275	\$4150	\$3395

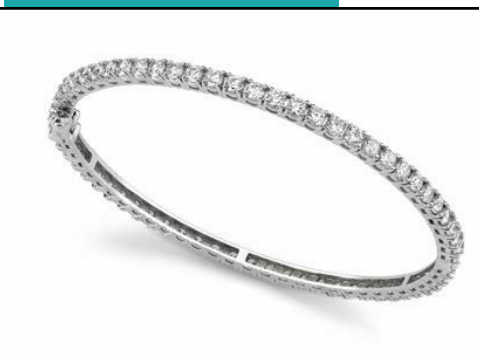
DIAMOND BANGLES



#BB33

QTY-TW	C	D	E
39=1.00	\$2395	\$2270	\$2140
31=1.50	\$3140	\$2940	\$2650
27=2.00	\$3725	\$3490	\$3100
21=3.00	\$6320	\$5895	\$4820

DIAMOND BANGLES



#BB34

QTY-TW	C	D	E
75=2.50	\$3725	\$3600	\$3100
63=5.00	\$7810	\$7210	\$5600

Prices are in wholesale cost in Canadian Dollars + GST/HST, in 14k.

J.W. Histed Diamonds Ltd.

Vancouver, B.C.



Large Single
Diamonds



Large Selection of In-Stock Inventory

Sizes from 0.10ct to 3ct+



Matching Pairs



Salt & Pepper—Galaxy—Rustic—Diamonds

Images—Sizes—Shapes—Pricing—www.jwdiamonds.ca

1-800-663-1458 / 604-681-8519 / fax 604-681-2413



Rose Cut and Brilliant Salt & Pepper Diamonds From 1mm to 1/2ct



1-800-663-1458 / 604-681-8519 / fax 604-681-2413 / info@jwdiamonds.ca



#TB1394

TW	QTY (ct)	<u>C</u>	<u>D</u>	<u>E</u>
0.78	52X.015	\$2490	\$2350	\$2210
1.49	45X.033	\$3100	\$2940	\$2695
1.88	43X.044	\$3700	\$3290	\$3020
2.46	41X.06	\$4410	\$4250	\$3710
2.93	39X.075	\$5100	\$4580	\$4180
4.10	36X.0114	\$7200	\$6690	\$5290



*DIAMOND NECKLACES
AVAILABLE FROM
2CT TW UP*



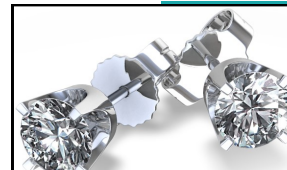
Assortment " C ": Clarity SI, mostly SI1 and SI2 some tough SI3. Colour F-G-H, mostly F-G-H

Assortment " D ": Clarity SI2 to I1+, mostly SI2 and TOUGH I1+, VERY eye clean. Colour F-G-H.

Assortment " E ": Clarity I1 TO I2+, mostly I1 and TOUGH I2+, 90% eye clean. Colour F-G-H.



DIAMOND STUD EARRINGS



#E323 Martini 3 claw (.12ct tw and larger)

#E44 Standard 4 claw (All Sizes)



PRICED PER PAIR IN 14K YELLOW OR WHITE



#E38 Bezel / Tube (.12ct tw and larger)

#E

#E310 Basket 4 claw (.12ct tw and larger)

TW	C	D	E
.02	\$69	\$67	\$62
.03	\$80	\$75	\$70
.04	\$94	\$90	\$84
.05	\$105	\$100	\$93
.06	\$112	\$105	\$95
.07	\$124	\$118	\$107
.08	\$133	\$124	\$110
.09	\$138	\$129	\$114
.10	\$149	\$137	\$119
.12	\$175	\$160	\$140
.15	\$237	\$218	\$169
.18	\$295	\$273	\$214
.20	\$327	\$300	\$235
.22	\$352	\$323	\$250
.25	\$388	\$355	\$273
.28	\$507	\$460	\$357
.30	\$538	\$488	\$375
.33	\$589	\$534	\$412
.35	\$640	\$575	\$444
.38	\$737	\$662	\$457
.40	\$774	\$695	\$494
.42	\$802	\$719	\$510
.45	\$907	\$757	\$547
.48	\$1032	\$689	\$644
.50	\$1075	\$907	\$669
.55	\$1200	\$1019	\$749



Larger
Diamond
earrings
available
IN-Stock
up to 4ct TW
Please call

1-800-663-1458

J.W. Histed Diamonds Ltd.

Vancouver

www.jwdiamonds.ca

1-800-663-1458

We are now Stocking Large Sizes

Lab. Diamonds!



736 Granville St.

Suite #1400

Vancouver, B.C., V6Z 1G3

604-681-8519

Fax 604-681-2413

info@jwdiamonds.ca

3/4ct to 2ct+ in Rounds and Fancy Shapes

IN-Stock IN-Vancouver IN-your Store

Same-Day Shipping!

Most Cities in Canada

Overnight!